



# POOJA APARTMENT

1, 2, 3 BHK Apartments

A RESIDENTIAL COMPLEX

(At Azara, Near Sabha Ghar)



## Salient features

---

- ☛ Swimming Pool, Gymnasium and Clubhouse
- ☛ R.C.C. framed structure designed as per B.I.S. norms conforming to seismic zone V to withstand earthquakes.
- ☛ Soil tested in laboratory and suggestions by soil consultant implemented in foundation design to achieve more than adequate bearing capacity.
- ☛ Copper wiring with MCBs in each flat.
- ☛ Safety grills for all flats.

## Safety & Security

---

- ☛ 24 hours water supply with filter plant.
- ☛ Generator facility for lifts, water pumps, common area lights.
- ☛ 5 passenger lifts.

## Specifications

---

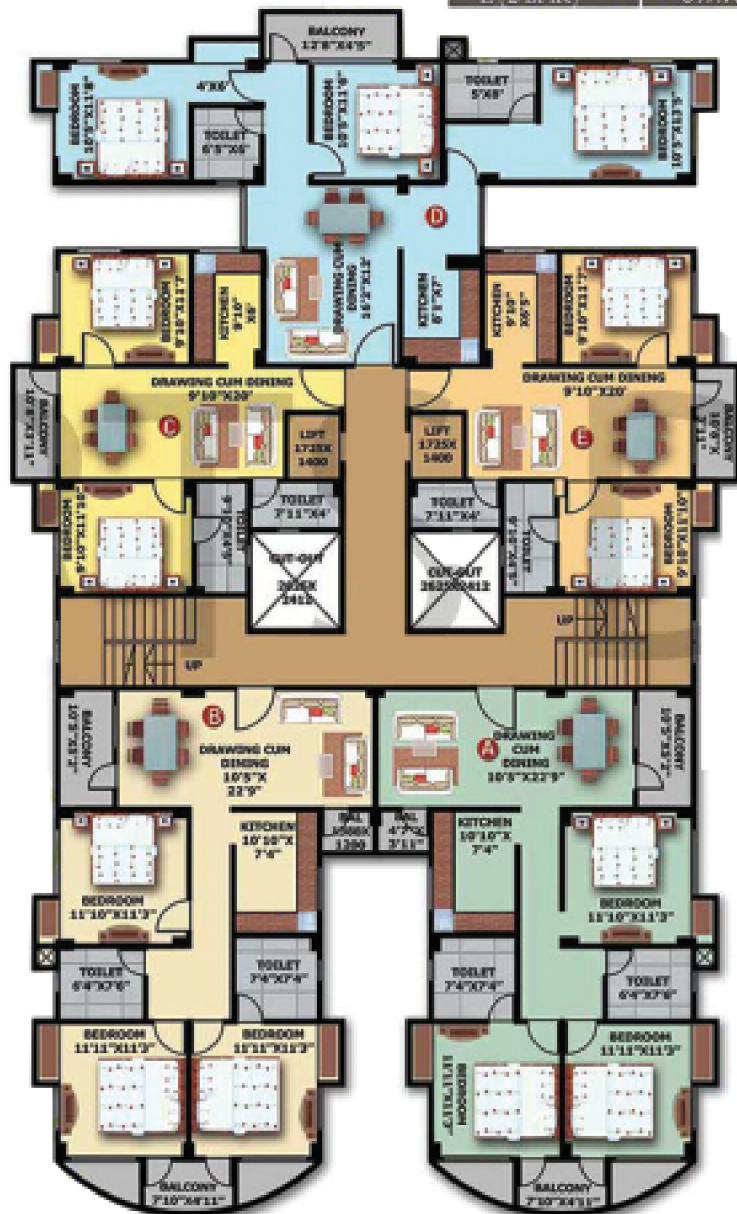
- ☛ Flooring 2' x 2' Vitrified tiles flooring in all flats. Anti skid ceramic tiles in toilets, Marble /Kota Stone in the Common areas like staircase & lift lobby.
- ☛ Wall finishes : A coat of cement primer over wall putty.  
Weathercoat exterior paint on all exterior wall. 12"x8" Ceramic tiles in toilet walls upto lintel height.  
12"x8" Ceramic tiles above counter top in kitchen upto 2' height
- ☛ Doors : Decorative wooden panelled door for main entrance. For others heavy duty bwp flush door.
- ☛ Plumbing : Concealed PPR piping work in all toilets and kitchen. Provision for both hot and cold water system. Geyser point in each toilet. Washing machine outlet. Water purifier point in kitchen., All C. P. fittings are of JAQUAR or Equivalent make.
- ☛ Sanitary : HINDWARE / PARRYWARE / Equivalent sanitary ware make in all toilets.

# Block A Floor Plan

1st, 2nd, 3rd, 4th , 5th & 6th  
Floor plan

## Area Details (BLOCK-A )

FLAT NO.	S.B.U. AREA
A (3 BHK)	1446.40 SQ. FT.
B (3 BHK)	1446.40 SQ. FT.
C (2 BHK)	892.40 SQ. FT.
D (3 BHK)	1328.00 SQ. FT.
E (2 BHK)	897.70 SQ. FT.



## Block A





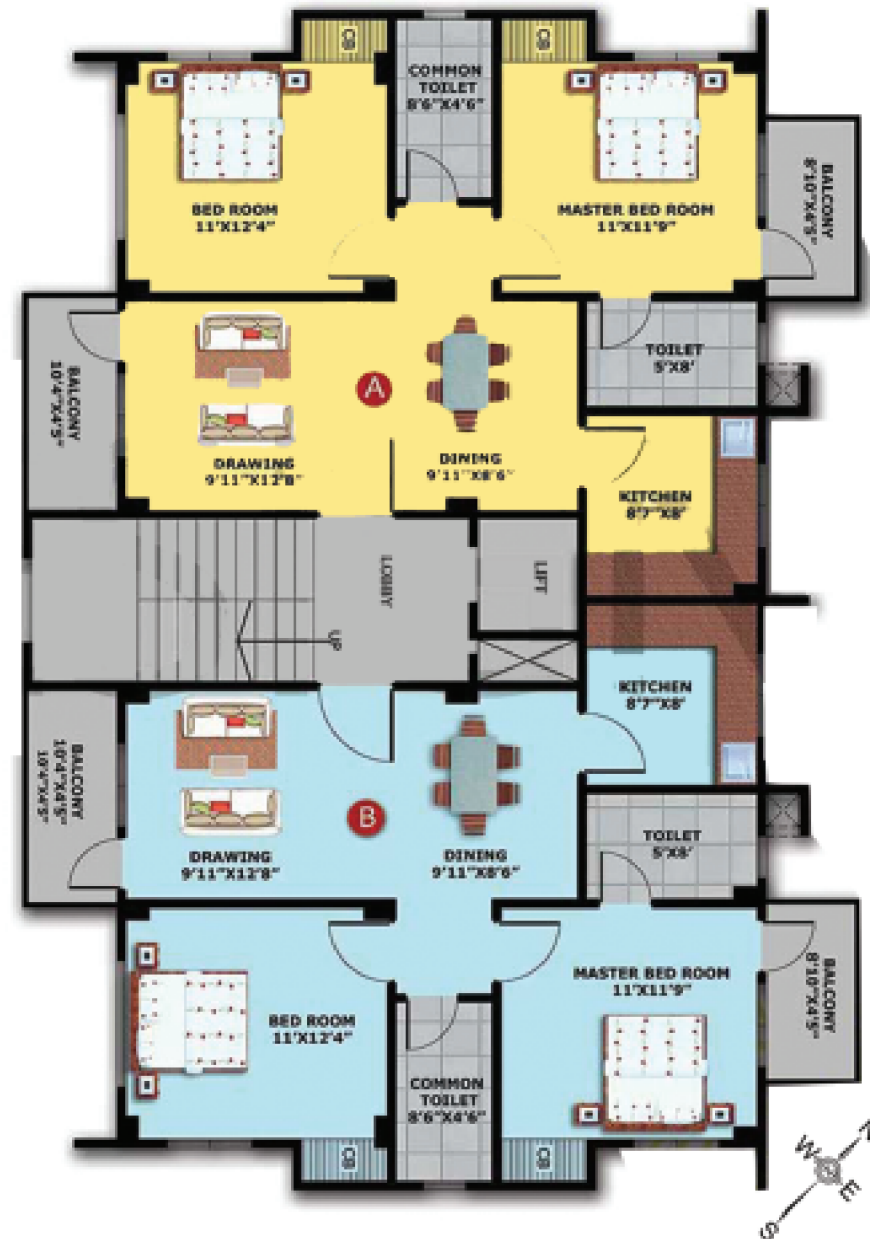
## Block B

## Block B Floor Plan

1st, 2nd, 3rd, 4th , 5th & 6th  
Floor plan

### Area Details (BLOCK-B )

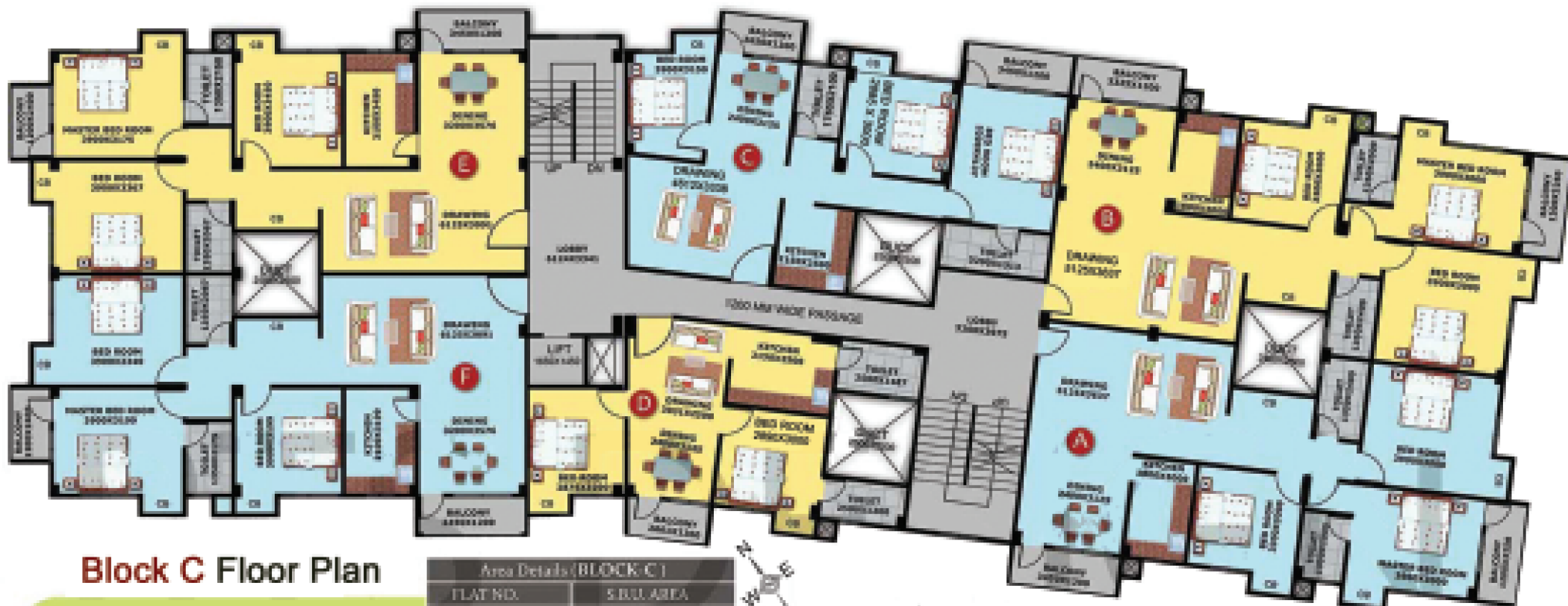
Flat No.	S.B.U.A
A (2BHK)	1000 sqft
B (2BHK)	1000 sqft



Block D

Block C





## Block C Floor Plan

1st, 2nd, 3rd, 4th, 5th & 6th  
Floor Plan

Area Details (BLOCK C)	
FLAT NO.	S.B.U. AREA
A (3BHK)	1415.74 sqft
B (3BHK)	1415.74 sqft
C (3BHK)	1205.658 sqft
D (2BHK)	734.619 sqft
E (3BHK)	1427.44 sqft
F (3BHK)	1427.44 sqft



## Block D Floor Plan

1st, 2nd, 3rd, 4th,  
5th & 6th Floor plan

Area Details (BLOCK-D)	
Flat No.	S.B.U. AREA
A (3BHK)	1342.31 sq.ft.
B (2BHK)	789.11 sq.ft.





# Block E

## Block E Floor Plan

### 1st, 2nd, 3rd & 4th FLOOR PLAN

Area Details (BLOCK - E)

Flat No.	Flat No.
A (2BHK)	674.92 sq.ft.
B (1BHK)	445.19 sq.ft.
C (1BHK)	436.72 sq.ft.
D (1BHK)	391.39 sq.ft.



### GROUND FLOOR PLAN (BLOCK - E)

Area Details (BLOCK - E)

Flat No.	S.B.U.E.
A (1BHK)	422.73 sq.ft.
B (1BHK)	414.28 sq.ft.
C (1BHK)	389.08 sq.ft.





GYM

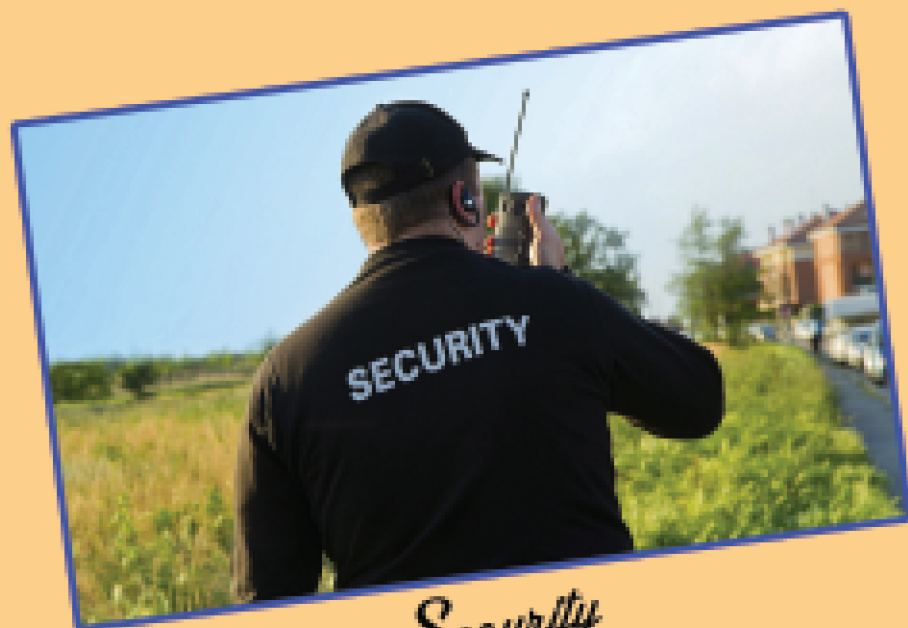


CLUBHOUSE

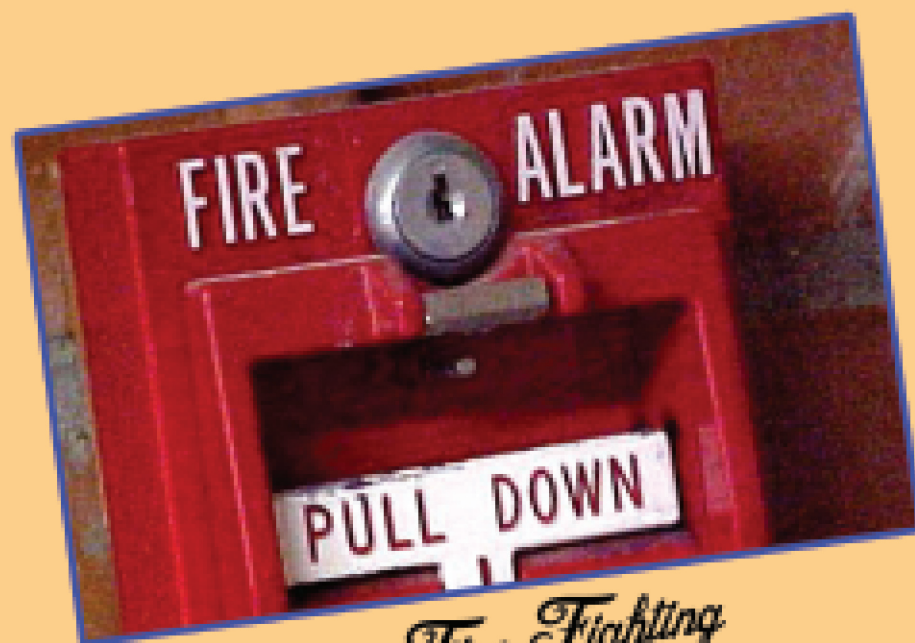


SWIMMING POOL





*Security*



*Fire Fighting*



*Car Parking*

BYE LANE

- GIRIJANANDA INSTITUTE
- DON BOSCO UNIVERSITY

Baruah Para Village

BLOCK E

BLOCK B

BLOCK A

ENTRANCE

BLOCK C

BLOCK D



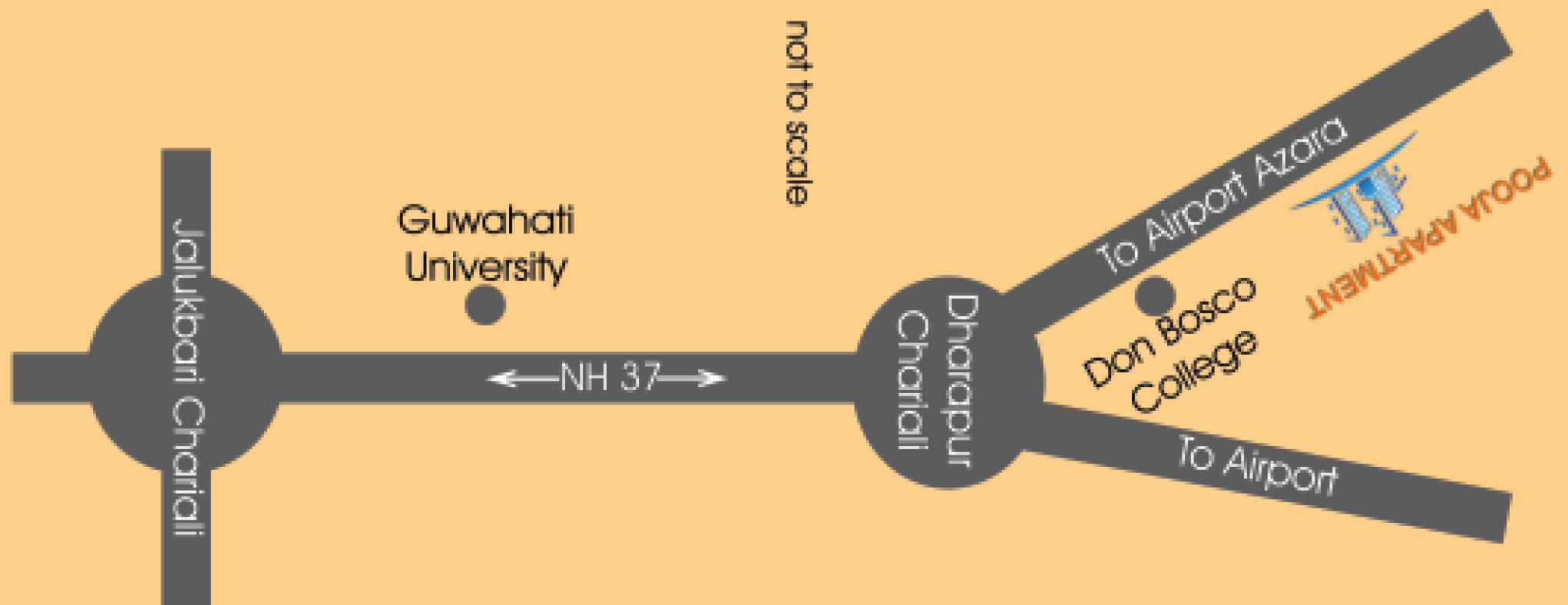
TOWARDS AIRPORT →

● AZARA SABHA GHAR

● AZARA POLICE STATION



# Location Map



Promoted By : Baruah Construction, 2nd Floor, UBI Building, Maligaon, Guwahati-11  
Contact Details : 96780-01412, 97060-44971, 97060-56971, 97060-02971

Architect : Amitabh Sarma, AKAR Foundation, Guwahati, Assam, [www.akarfoundation.in](http://www.akarfoundation.in)